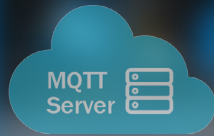


Built-in Haiwell Cloud Configuration

Capacitive touch screen Aluminum alloy shell



Industrial Panel PC



R Series Intelligent IPC

10 Highlights

- Built-in Haiwell Cloud SCADA Software makes it easier for devices to access the cloud, unlimited variables number.
- Enable simple connection between HMI, mobile phone, tablet, computer, TV, camera and other HMIs in local area network.
- Connect to mobile phones, tablets, computers, TVs, cameras and other HMIs via the Internet.
- Allow remote access for multiple concurrent users without SCADA in the cloud or VNC connection.
- Provide data transmission and data storage in any public or private server.
- Integrate data with ERP, MES or other applications by MQTT, OPC UA, HTTP, TCP and etc.
- Include intelligent functions such as TTS output, intercom, audio playing, video surveillance and etc.
- Use mobile phone as a scanner to scan barcode and enter information in IPC.
- Apply to data visualization or centralized control on large screen by TVBOX.
- HD full viewing angle capacitive screen, narrow frame design, aluminum alloy shell, highlighting exquisiteness and high-end quality.

Model List

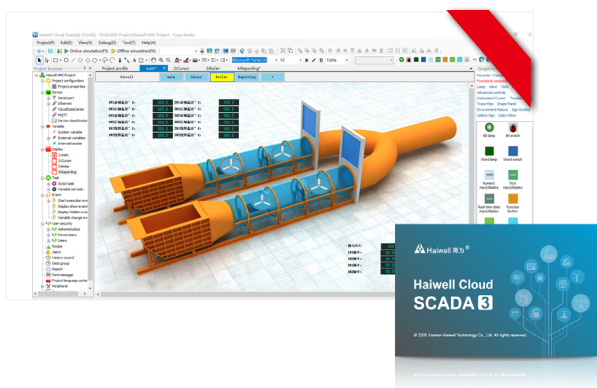
Model	TFT Screen	RAM	Flash	CPU	LAN	COM	WIFI	Display Port	USB	Video Play	Local Camera	RFID	Special Function	Hole Size	Dimension W*H*D
R15 (Linux)	15.6" 1920*1080 HD Full Viewing Angle Capacitive Screen Aluminum alloy shell	8G/16G/32G Optional	512G/1T/2T Optional	Intel Core i5	2	3*RS232 1*RS485	1	VGA HDMI	2	Yes	Yes	Yes	Built-in Haiwell Cloud SCADA	383×245mm Chamfer: R7mm	394×256×53mm
R21 (Linux)	21.5" 1920*1080 HD Full Viewing Angle Capacitive Screen Aluminum alloy shell	8G/16G/32G Optional	512G/1T/2T Optional	Intel Core i5	2	3*RS232 1*RS485	1	VGA HDMI	2	Yes	Yes	Yes	Built-in Haiwell Cloud SCADA	531x322mm Chamfer: R7mm	538x330x53mm
R15 (Windows)	15.6" 1920*1080 HD Full Viewing Angle Capacitive Screen Aluminum alloy shell	8G/16G/32G Optional	512G/1T/2T Optional	Intel Core i5	2	3*RS232 1*RS485	1	VGA HDMI	2	Yes		Yes	Built-in Haiwell Cloud SCADA	383×245mm Chamfer: R7mm	394×256×53mm
R21 (Windows)	21.5" 1920*1080 HD Full Viewing Angle Capacitive Screen Aluminum alloy shell	8G/16G/32G Optional	512G/1T/2T Optional	Intel Core i5	2	3*RS232 1*RS485	1	VGA HDMI	2	Yes		Yes	Built-in Haiwell Cloud SCADA	531x322mm Chamfer: R7mm	538x330x53mm

Products Features



Built-In Haiwell Cloud Configuration

Haiwell Cloud Configuration Software makes it easier for devices to access the cloud, unlimited variables number.



Capacitive Touch Screen

Supports wet hand operation, sensitive touch, instant response with a light touch of fingertips. High brightness, perfect restoration of image color and clarity.



Video Surveillance

HMI can connect with camera supporting RTSP or EZVIZ protocol by Ethernet. The camera can be watched on HMI and APP.



Video Playing

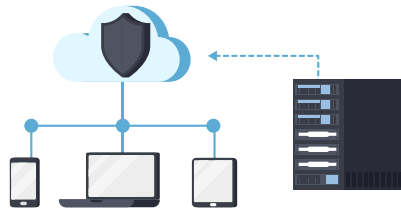
You can play video on HMI. The supported format is MP4.





Data Security

The user data is not stored in Haiwell cloud. All the data can be stored in private or public server assigned by users.



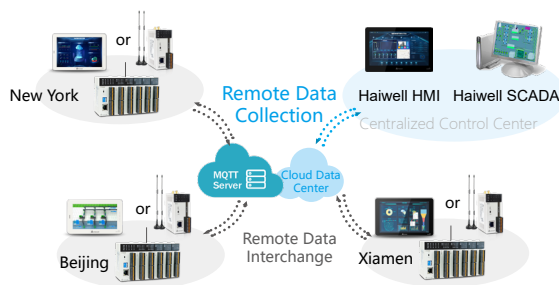
Web API

Users can get the data and control device on their own platform or software by Web API in local area network or over Internet.



Remote Centralized Control

All the data of remote devices can be acquired through MQTT broker for centralized control. Users don't even need to deploy server if using cloud data center.



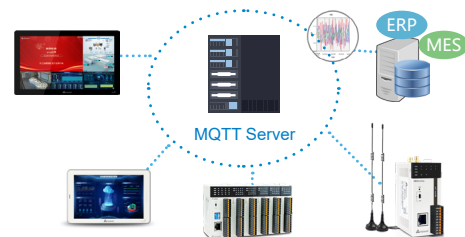
IoT Platform

All models support the connection to Alibaba Cloud IoT, AWS IoT and Google Cloud IoT Core.



MQTT Protocol

MQTT protocol is supported and applied to the connection with ERP/MES/database.



Text To Speech

The english text can be converted into voice . Audio files can also be played.



Support text to speech



Voice Intercom

All models support voice intercom, voice broadcast and remote intercom with APP.



Support voice intercom



USB to audio adapter



Support voice broadcast



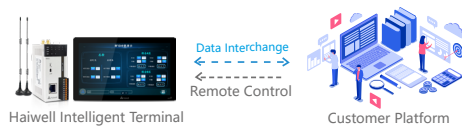
Support remote intercom and broadcast with mobile phone





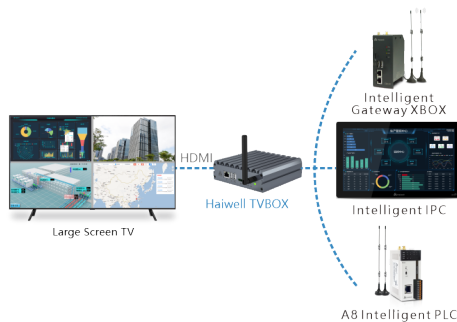
Display Integration

The display of HMI can be embedded in other applications such as software, website, APP and etc so that they have remote access to HMI.



Digital Display Board

The production data, device state and video surveillance can be viewed on large screen by connecting with TVBOX. It can be applied to data visualization and centralized control.



RFID/NFC

HMI supports reading RFID tags and NFC recognition, which can be applied to user login and access control.



Connection In LAN

All models have built-in IIoT technology which enables local access and open interface without internet.



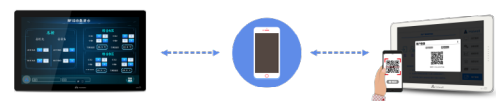
Mobile Scanner

You can turn your mobile phone into a barcode scanner and enter information everywhere. It's more convenient than external scanner.



Mobile Authentication

The identity of operator can be verified by using NFC recognition or scanning a QR code with mobile phone.



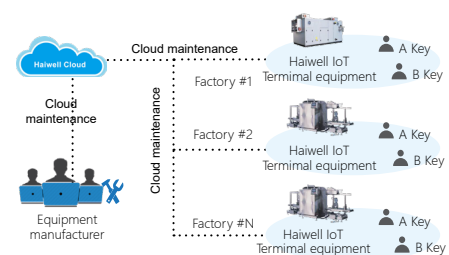
Secure Access

The remote access needs to be identified by the A/B key security mechanism. The remote control can be configured to be authorized on HMI.



Cloud Maintenance

It's easier for manufacturers to manage equipments by using remote maintenance function.



Remote Access

With the real-time control solution developed by Haiwell, concurrent users can remotely access HMI by APP and desktop.



Products Specification

Products Specification		R15	R21	R15 (W)	R21 (W)
System	System	Linux	Linux	Windows	Windows
Display	Screen size	15.6 " TFT	21.5 " TFT	15.6 " TFT	21.5 " TFT
	Resolution	1920x1080 pixels			
	Display color	262K	16.7M	262K	16.7M
	Brightness	350 cd/m ²	250 cd/m ²	350 cd/m ²	250 cd/m ²
	View available	85°/85°/85°/85°	89°/89°/89°/89°	85°/85°/85°/85°	89°/89°/89°/89°
	Touch panel type	Capacitive Touch Screen			
Backlight	Type	LED			
	Life	50,000 Hours			
	Auto sleep function	Yes			
Hardware	CPU	Intel Core i5			
	Flash	Optional (512G/1T/2T)			
	RAM	Optional (8G/16G/32G)			
	Ethernet port	10/100/1000 Base-T*2			
	Serial port	COM1:RS485*1 COM2-COM4:RS232*3			
	USB HOST	USB3.0*2			
	RTC	Yes			
Power	Rated input power	12V DC Power Supply			
	Power consumption	30W	36W	30W	36W
	Power protection	Equipped with surge protection and anti reverse connection protection			
	Withstand voltage	500VAC			
	Insulation resistance	over 50MΩ @500VDC			
Enviroment	Vibration resistance	10~25 Hz (X, Y, Z axis 2G/30 minutes)			
	Cooling method	Natural wind cooling			
	Storage temperature	The panel meets IP65 and the body meets IP20			
	Operating temperature	-20 ° C~ 70 ° C			
	Operating temperature	-10° C~60° C			
	Relative humidity	10% ~ 90% RH (No condensation)			
	Operating environment	Dustproof,moisture proof,corrosion resistant,and protected from electric shock and external impact environments			
Structure	Material	Metal shell + glass panel			
	External dimensions (WxHxD)	394*256*53mm	538*330*53mm	394*256*53mm	538*330*53mm
	Panel cut dimensions (WxH)	383x245mm (R7)	531x322mm (R7)	383x245mm (R7)	531x322mm (R7)
	Weight	5.3kg	8.5kg	5.3kg	8.5kg
	Installation	Panel Mount、VESA(100*100)			
Function	WIFI	Support 802.11 b/g/n/ac			
	RFID	Support			
	Speaker	External			
	microphone	External			
Software	Programming software	Haiwell Cloud SCADA			



海纳百川 诚信有为

XIAMEN HAIWELL TECHNOLOGY CO., LTD.

Headquarters: 13-14/F, C03 Building, Phase III Software Park,
Jimei District, Xiamen, Fujian, China
Factory: 4F, No. 336-2, Anbian Nan Road, Torch High-tech Zone
(Xiang 'an) Industrial Zone, Xiang 'an District, Xiamen, Fujian,
China. 361101
Tel: +86-592-2230312 Hotline: +86-4000-360-362
Email: service@haiwell.com
Website: www.haiwell.com



Haiwell APP



Haiwell Wechat

The parameters of product are subject to changes without prior notice. (Ver I - 202511)